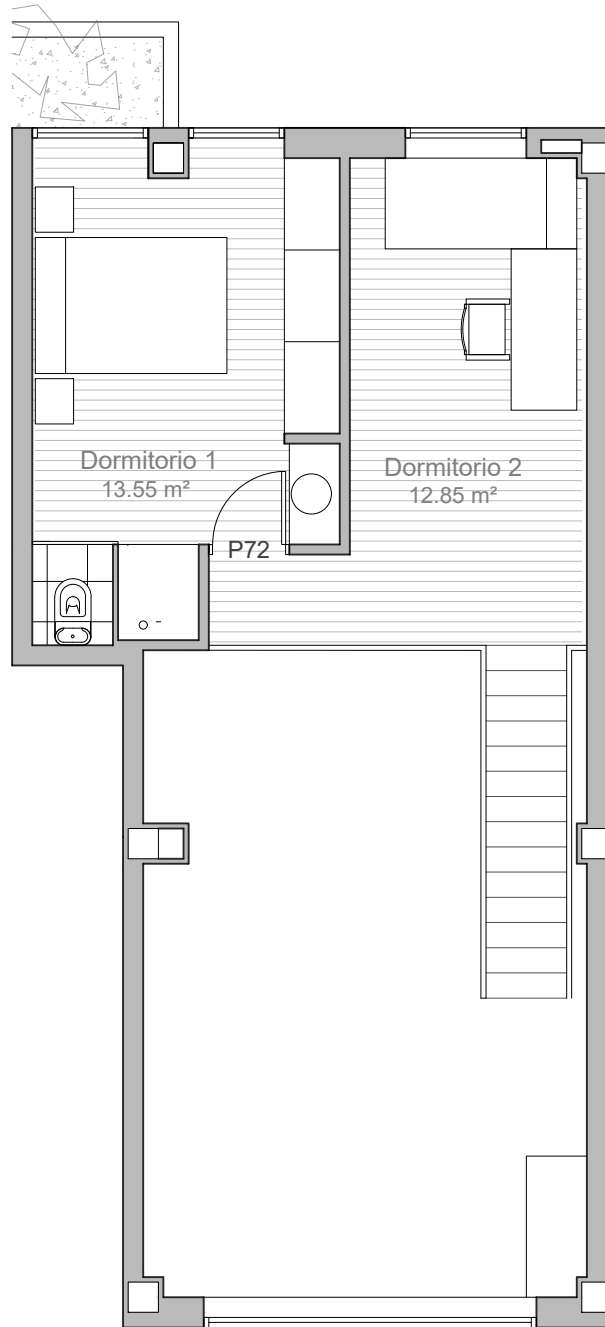
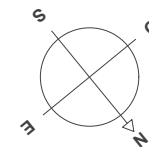
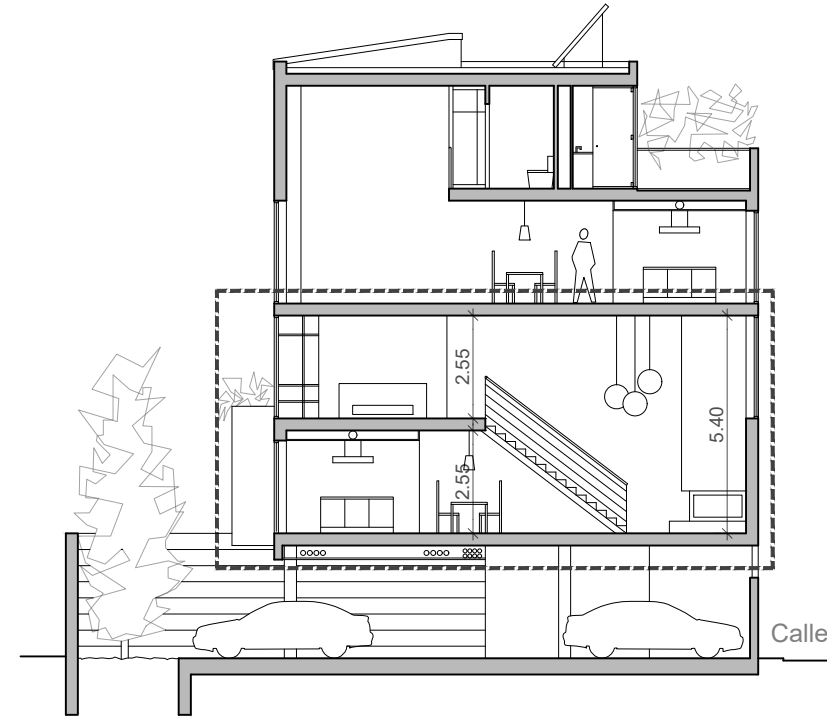


Planta 1



Entreplanta



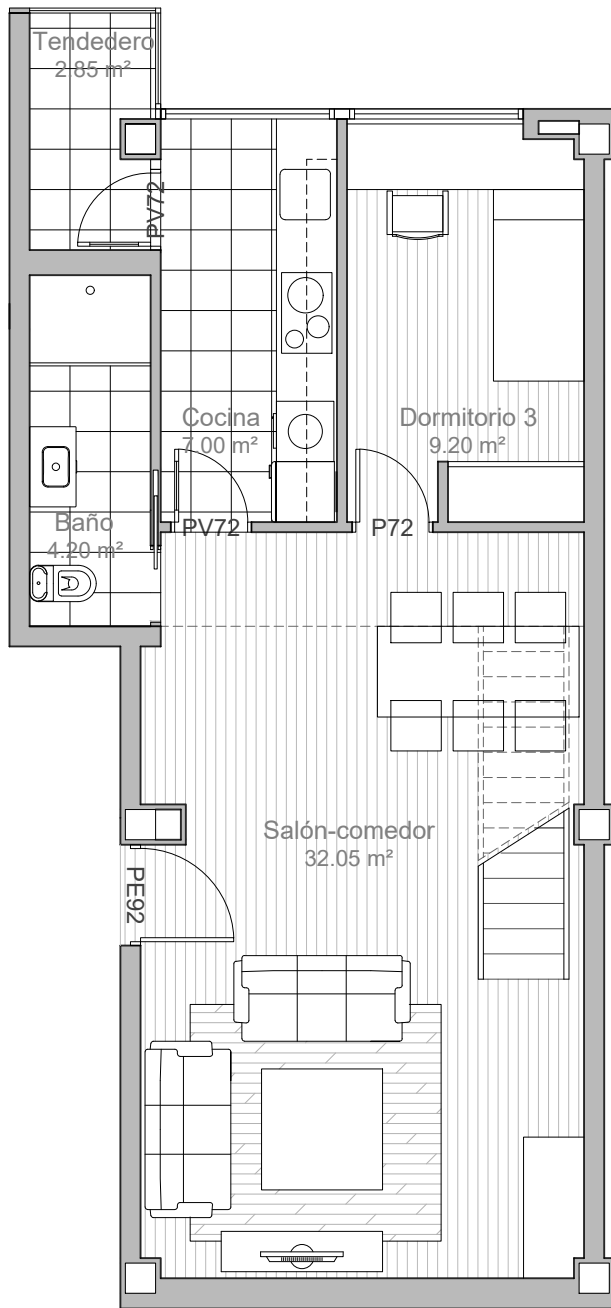
Vivienda V-2

Superficie construida total 103,70 m²

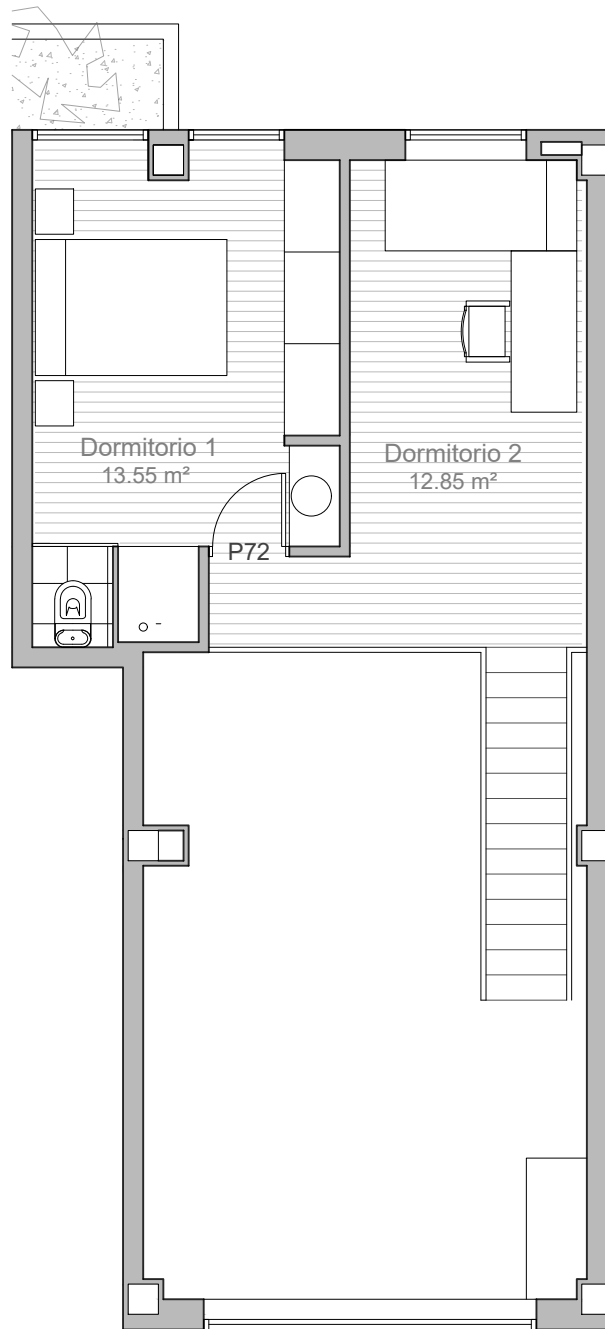


6 Estudio
Seis
Arquitectura

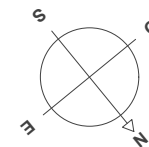
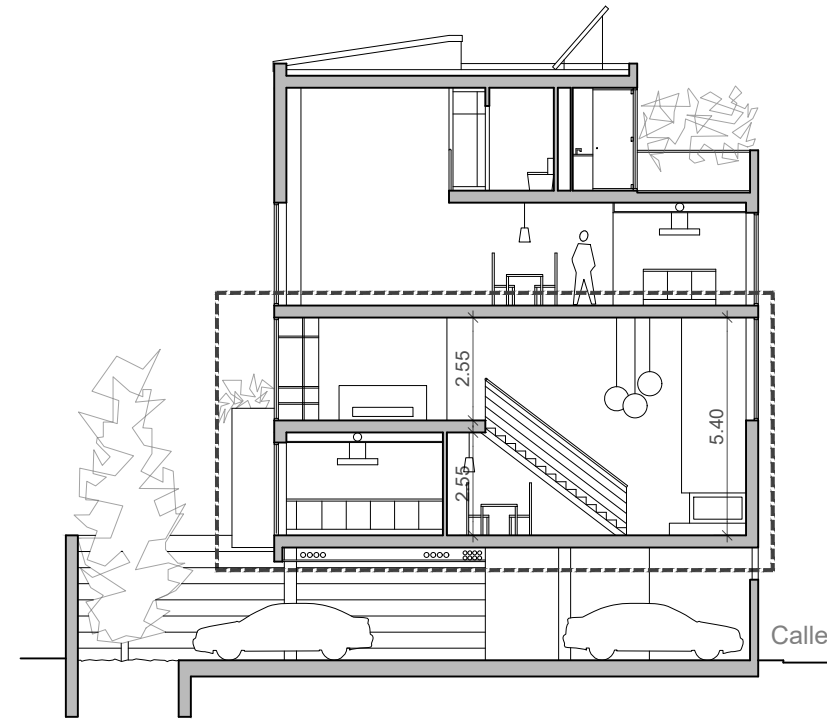
CI Rodríguez San Pedro, 2, oficinas 1010-1011, Madrid
Tel 915 943 107 Fax 914463483 mail@estudioseis.com



Planta 1



Entreplanta



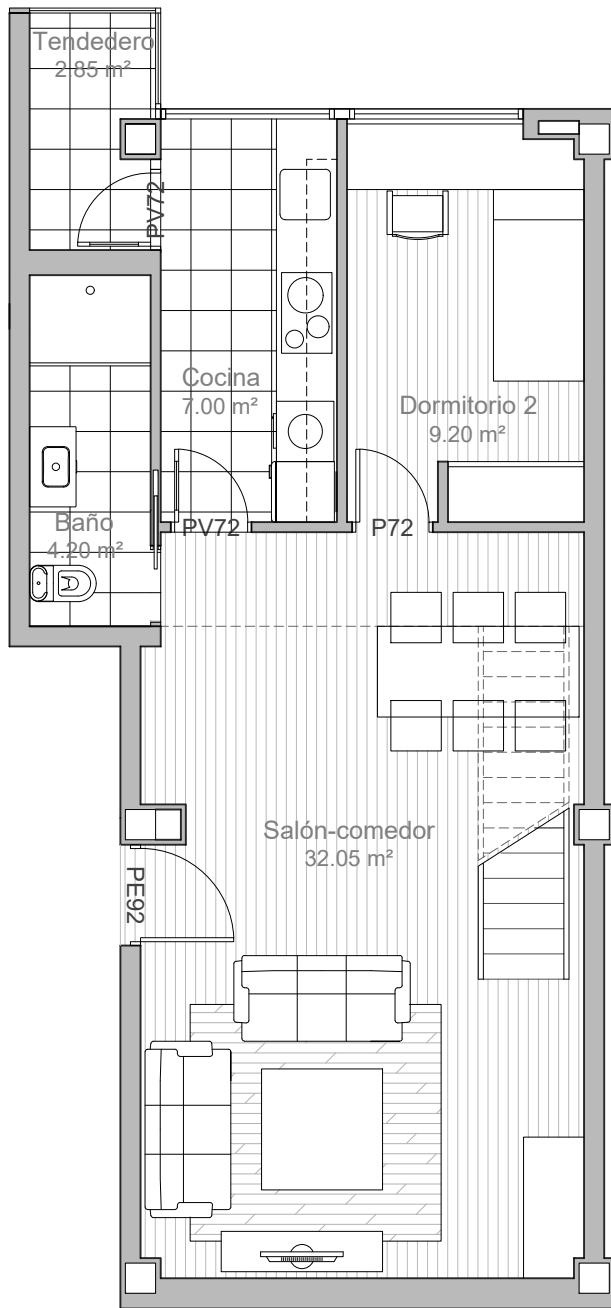
Vivienda **V-2 (3 dormitorios)**

Superficie construida total **103,70 m²**



Estudio Seis Arquitectura

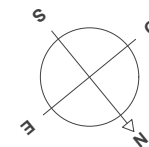
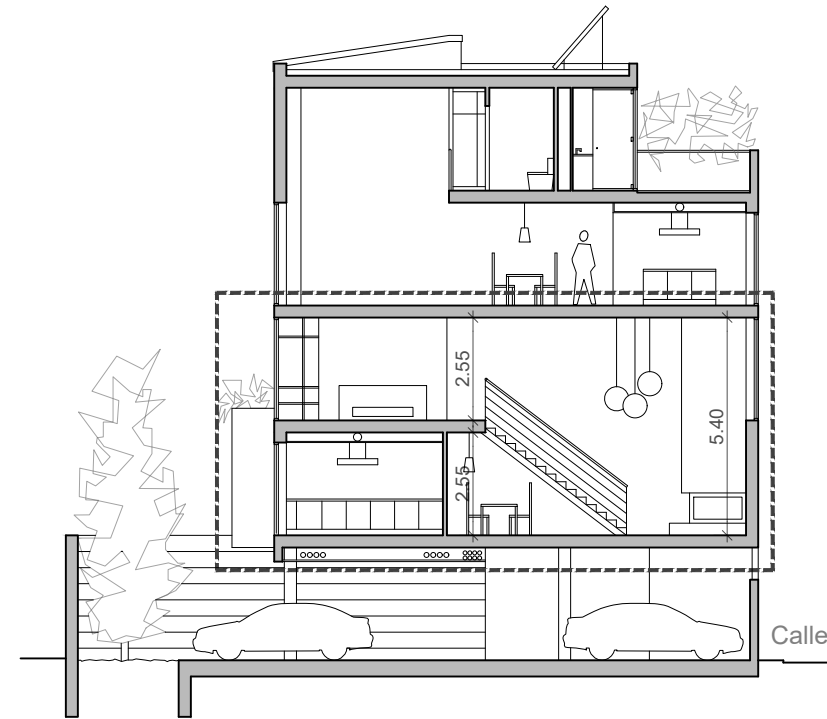
CI Rodríguez San Pedro, 2, oficinas 1010-1011, Madrid
Tel 915 943 107 Fax 914463483 mail@estudioseis.com



Planta 1



Entreplanta



Vivienda V-2 (2 dormitorios)

Superficie construida total 103,70 m²



Estudio Seis Arquitectura

CI Rodríguez San Pedro, 2, oficinas 1010-1011, Madrid
Tel 915 943 107 Fax 914463483 mail@estudioseis.com